

Technical Note

Project:	Glasnevin Educate Together National School	To:	Roisin Conlon, Principal
Subject:	Traffic Management Plan	From:	Martin Deegan
Date:	12 th May 2025	cc:	The Board of Management

Traffic Management Plan Objective

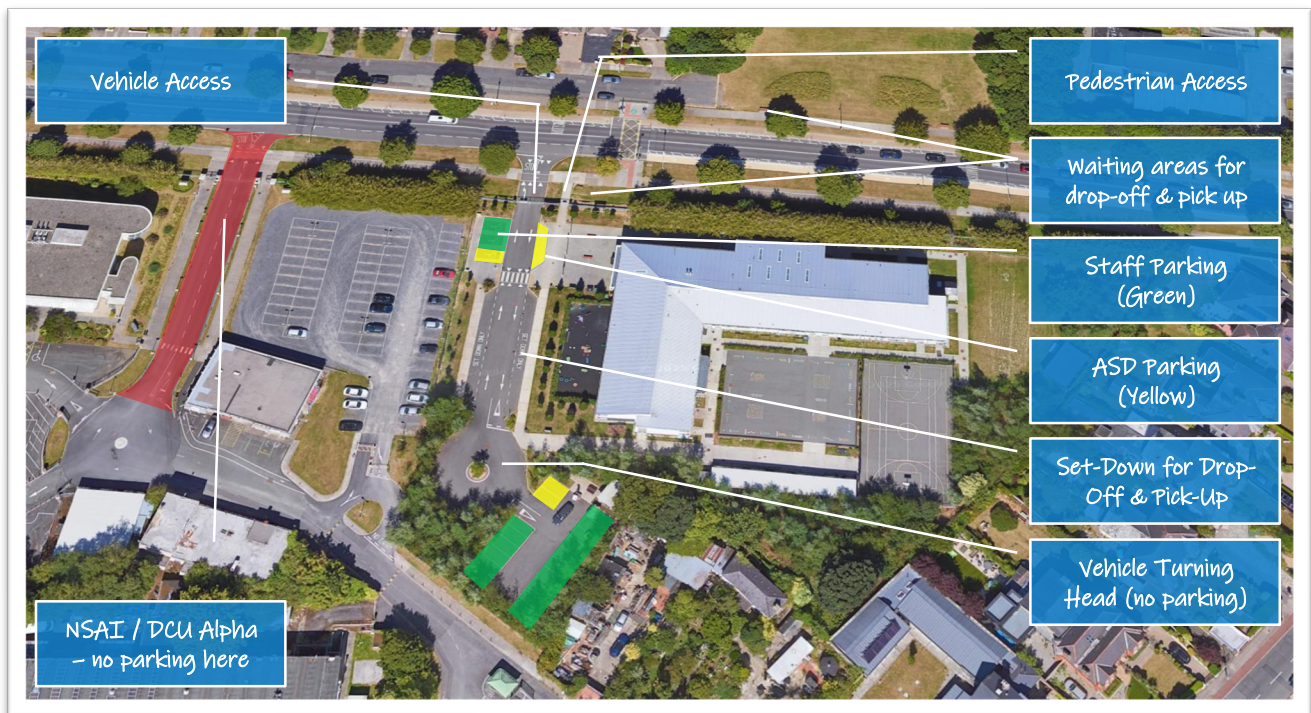
The primary objective of this traffic management plan is to ensure the safety of all school end users by providing practical guidance on how best to manage the movement of pedestrians, cyclists, and motorists around the school premises.

For the purposes of this traffic management plan, school end users include pupils, staff, parents, guardians and service providers.

School Layout & Key Traffic Management Elements

The following figure, courtesy of Google Maps, provides an overview of the school and some of the key features relevant to traffic management.

Figure 1 – School General Arrangement and Key Traffic Management Elements



Management of Vehicle Access – Ensuring Safe Driver Behaviour

Vehicle Access & Circulation – Drivers Should Give Way to Pedestrians & Cyclists

- All drivers entering the school grounds are reminded that the passage of walkers and cyclists takes precedence over vehicles.
- Drivers should yield to pedestrians and cyclists at the school access, on the internal streets, in drop-off and pick-up areas and in parking zones.

Technical Note

Drop-off/Pick-up Zones – Please Do Not Park Here

- To ensure safe and efficient circulation, drop-off and pick-up activities should be completed promptly.
- Parking or extended stopping are not permitted in drop-off and pick-up zones (a 'kiss and drop' approach should be taken here).
- The NSAI / DCU Alpha Campus access road should not be used for either drop-off or pick-up parking.
- This activity has been observed to impact negatively upon the safety of the NSAI / DCU Alpha Campus access road and also the safe operation of the footpath and cycle track on Griffith Avenue.

Allocated Parking for ASD Pupils and School Staff

- Parking spaces allocated for use by ASD pupils have been shown in yellow in the preceding Figure 1.
- Parking spaces allocated for use by staff have been shown in green in the preceding Figure 1.

Personal Duty of Care for Pedestrians and Cyclists

- Parents, guardians and pupils should wait beside the school pedestrian gate or in the green area across Griffith Avenue for drop-off or pick-up activity.
- Parents, guardians and pupils waiting here should take care not to block or obstruct footpaths and cycle tracks.
- Cyclists and scooter riders entering via the pedestrian gate should dismount.
- Parents, guardians and Senior Cycle pupils may cycle into the school via the main vehicle access using appropriate care and vigilance.
- Drivers entering the school via the main vehicle access are directed to yield to cyclists.

Communication and Education

- The success of the traffic management plan will depend on buy-in from all end users and the persistent communication of the plan and its objectives.
- The direction provided within the traffic management plan should be communicated regularly in class rooms, at staff meetings and at parent teacher committee meetings.
- Senior Cycle students are encouraged to undertake a school road safety project and then showcase their findings to the school and their parents or guardians.
- For further information see: <https://www.rsa.ie/road-safety/education/primary>

Supervision and Monitoring

- Supervision and monitoring also play key roles, and all school end users are encouraged to patrol the school access points and set-down areas on a regular (planned basis) basis to ensure that a safe school environment can be maintained.
- The essential supervision and monitoring activity could be linked to the Senior Cycle school road safety project.

Implementation and Review

- The plan should begin at the new school term. Inform pupils, staff, parents, guardians, and service providers about the plan, their duty of care, and its objectives.
- The plan should be reviewed annually to assess its effectiveness and make necessary adjustments.
- By following this traffic management plan, we aim to create a safer environment for everyone involved in the school community.